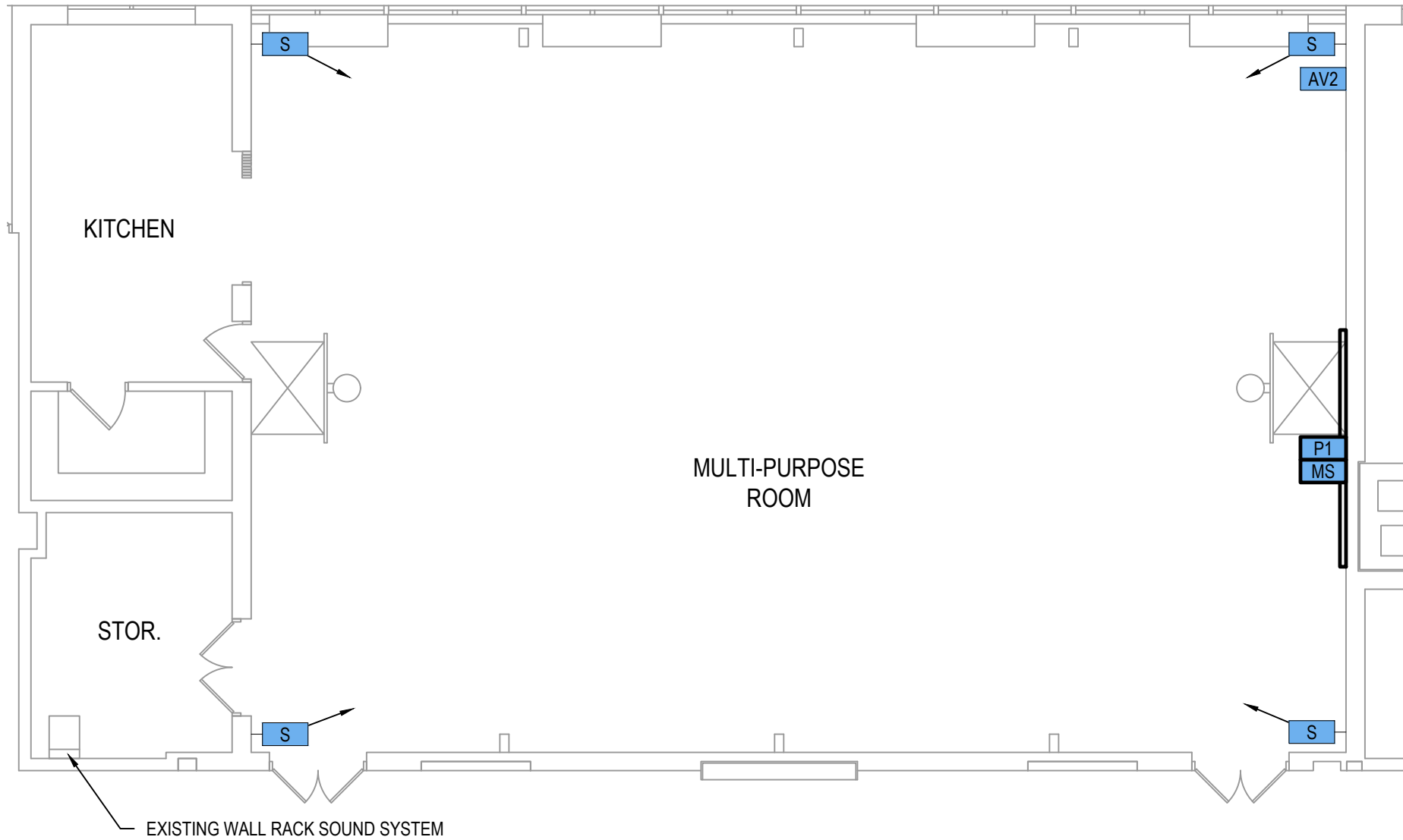


O:\Consulting\Clients\Active Projects\Dearborn Heights SD No. 70\HSD7 2504g - Large A_V Spec (Bid by Owner)\Drawings\Secant\HSD72504G T101 - BEDFORD ES.dwg, 9/13/2018 11:55:50 AM



SYMBOL LEGEND	
P1	NEW SHORT-THROW PROJECTOR
MS	NEW MOTORIZED SCREEN
SC	EXISTING FIXED SCREEN
AV1	(1) EXISTING XLR MIC INPUT
AV2	(2) EXISTING XLR MIC INPUTS
AV3	(1) EXISTING 1/4" PHONO PLUG SOCKET
S	EXISTING LOCAL AV SPEAKER



Bedford ES - AV Plan
1/8" = 1'-0"



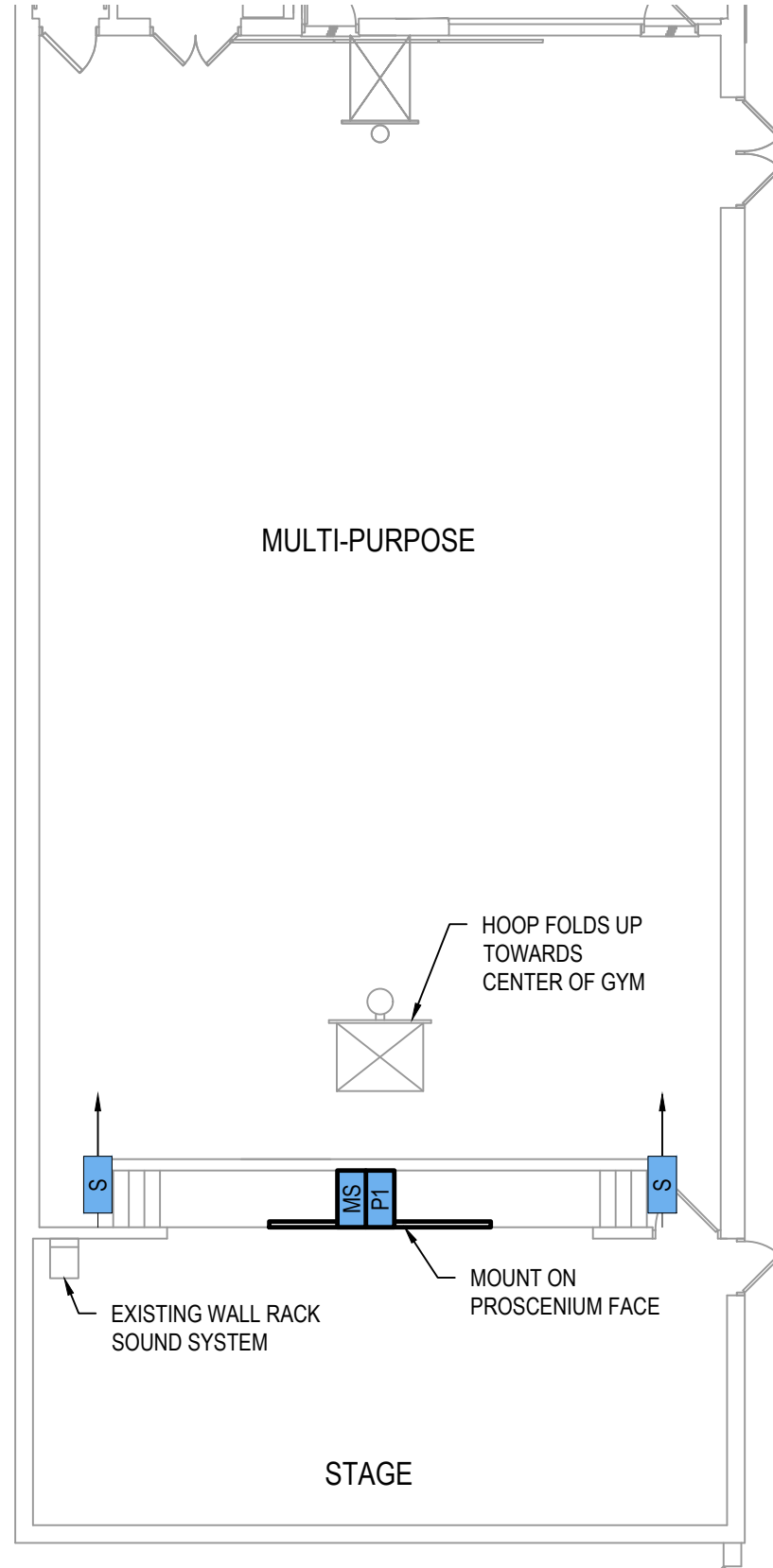
6395 TECHNOLOGY AVENUE, SUITE A, KALAMAZOO, MI 49009
P: 269-375-8996 · F: 269-375-4222 · WWW.SECANTCORP.COM

Dearborn Heights School District 7
AV Systems for Large Spaces
Dearborn Heights, MI

Bedford ES - AV Plan

DATE ISSUED 2018-09-13
REVISION DATE _____ _____ _____
DRAWN BY JAJ/NWW
PROJECT NO. 2504G
SHEET NO. T101
© 2018 SECANT, ALL RIGHTS RESERVED.

O:\Consulting\Clients\Active Projects\Dearborn Heights SD No. 70\HSD7 2504g - Large A_V Spec (Bid by Owner)\Drawings\Secant\HSD72504G T102 - PARDEE ES.dwg, 9/13/2018 11:55:52 AM



SYMBOL LEGEND

P1	NEW SHORT-THROW PROJECTOR
MS	NEW MOTORIZED SCREEN
SC	EXISTING FIXED SCREEN
AV1	(1) EXISTING XLR MIC INPUT
AV2	(2) EXISTING XLR MIC INPUTS
AV3	(1) EXISTING 1/4" PHONO PLUG SOCKET
S	EXISTING LOCAL AV SPEAKER



Pardee ES - AV Plan

3/32" = 1'-0"



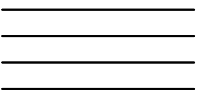
Dearborn Heights School District 7
AV Systems for Large Spaces
 Dearborn Heights, MI

Pardee ES - AV Plan

6395 TECHNOLOGY AVENUE, SUITE A, KALAMAZOO, MI 49009
 P: 269-375-8996 · F: 269-375-4222 · WWW.SECANTCORP.COM

DATE ISSUED
 2018-09-13

REVISION DATE



DRAWN BY
 JAJ/NWW

PROJECT NO.
 2504G

SHEET NO.

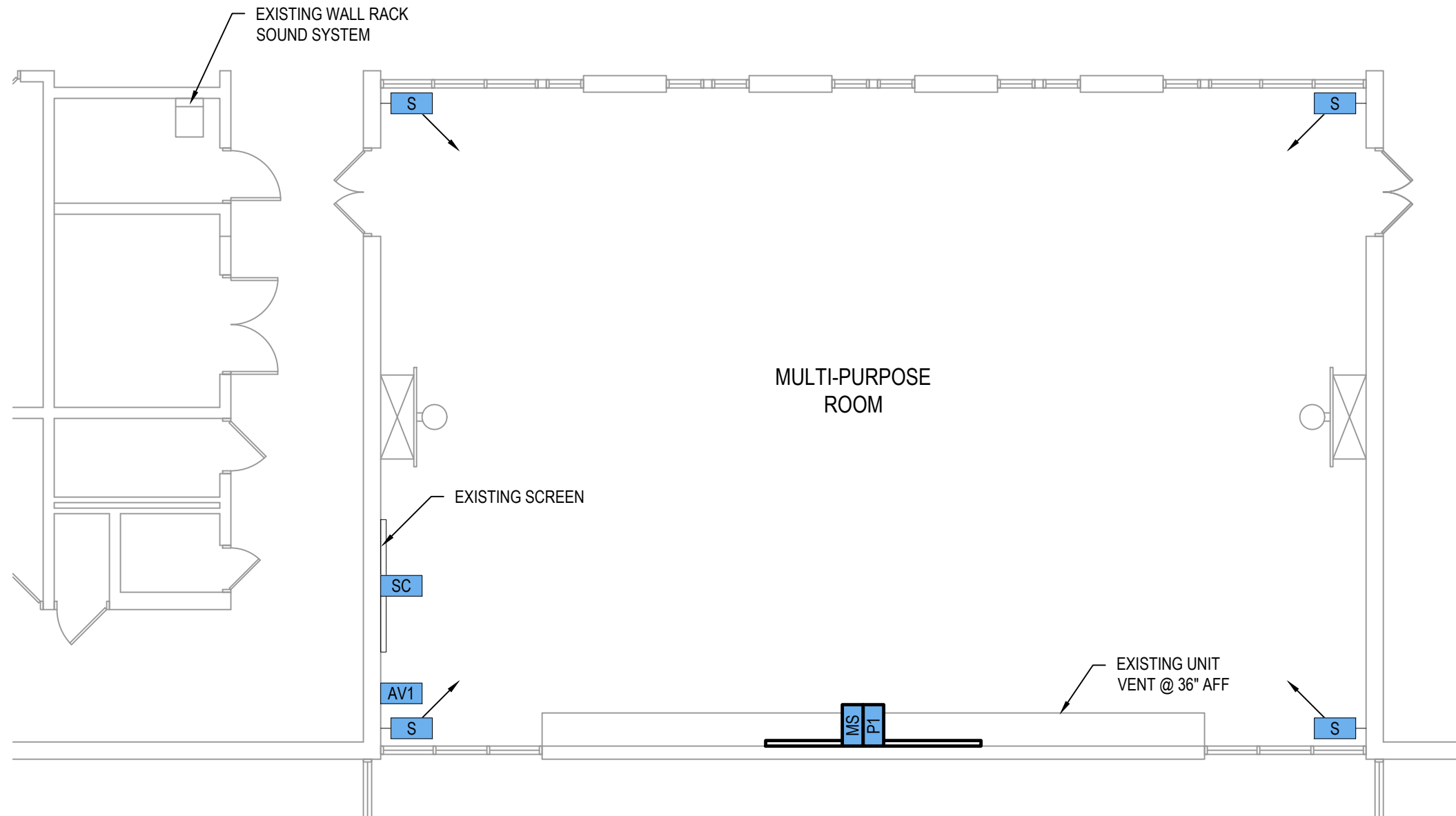
T102

© 2018 SECANT, ALL RIGHTS RESERVED.

O:\Consulting\Clients\Active Projects\Dearborn Heights SD No. 70HSD7 2504g - Large A_V Spec (Bid by Owner)\Drawings\Secant\HSD72504G T103 - POLK ES.dwg, 9/13/2018 11:55:55 AM

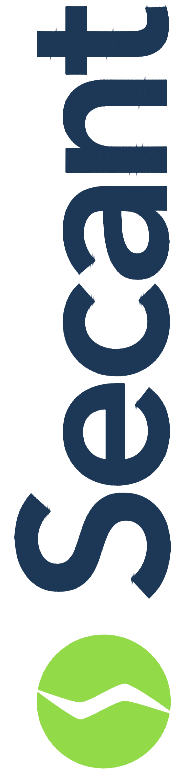
SYMBOL LEGEND

P1	NEW SHORT-THROW PROJECTOR
MS	NEW MOTORIZED SCREEN
SC	EXISTING FIXED SCREEN
AV1	(1) EXISTING XLR MIC INPUT
AV2	(2) EXISTING XLR MIC INPUTS
AV3	(1) EXISTING 1/4" PHONO PLUG SOCKET
S	EXISTING LOCAL AV SPEAKER



Polk ES - AV Plan

1/8" = 1'-0"



6395 TECHNOLOGY AVENUE, SUITE A, KALAMAZOO, MI 49009
 P: 269-375-8996 · F: 269-375-4222 · WWW.SECANTCORP.COM

Dearborn Heights School District 7
 AV Systems for Large Spaces
 Dearborn Heights, MI

Polk ES - AV Plan

DATE ISSUED
 2018-09-13

REVISION DATE

DRAWN BY
 JAJ/NWW

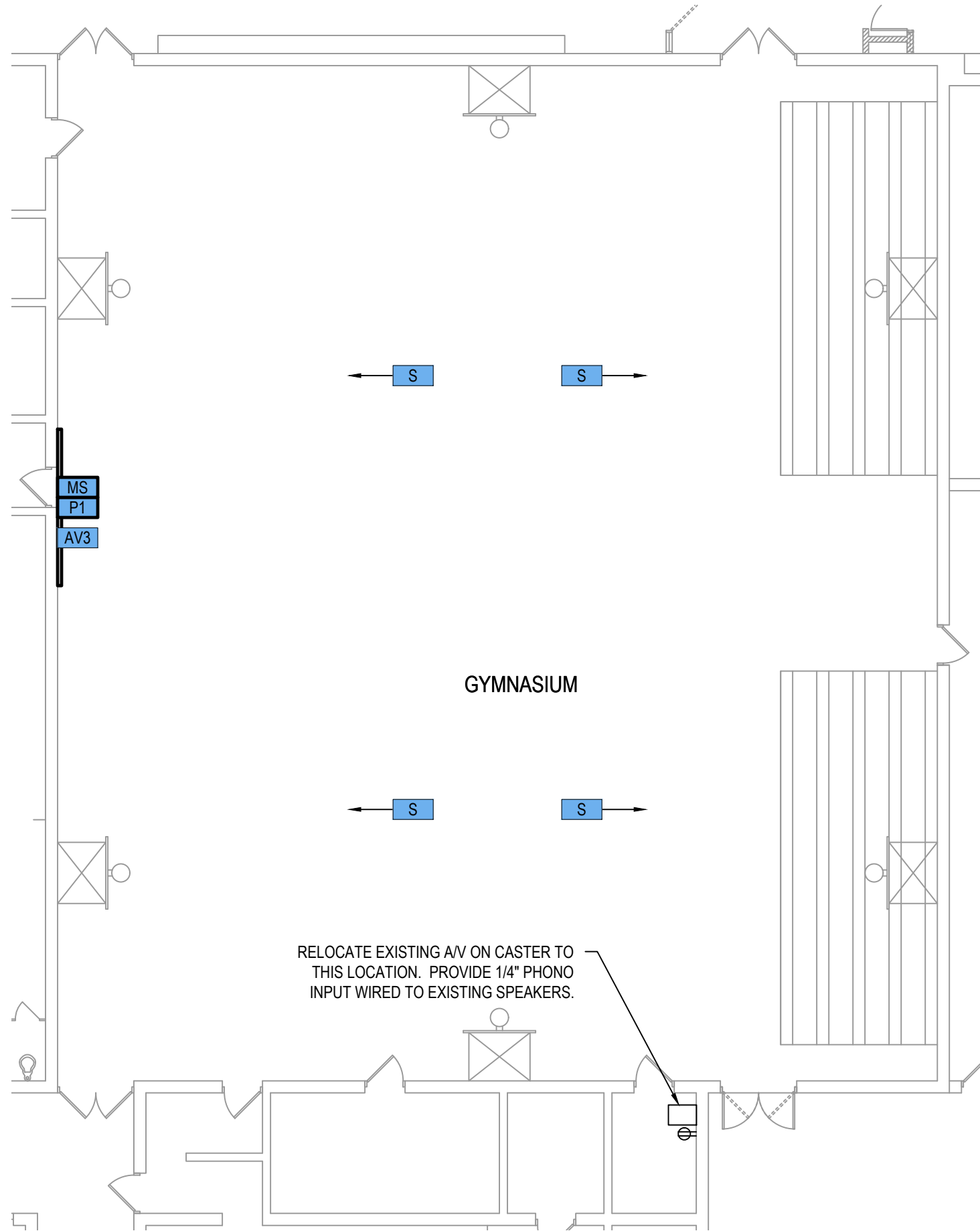
PROJECT NO.
 2504G

SHEET NO.

T103

© 2018 SECANT, ALL RIGHTS RESERVED.

O:\Consulting\Clients\Active Projects\Dearborn Heights SD No. 70DHSD72504g - Large A_V Spec (Bid by Owner)\Drawings\Secant\DHSD72504G T104 - OAKLEY W BEST MS.dwg, 9/13/2018 11:55:58 AM



SYMBOL LEGEND

P1	NEW SHORT-THROW PROJECTOR
MS	NEW MOTORIZED SCREEN
SC	EXISTING FIXED SCREEN
AV1	(1) EXISTING XLR MIC INPUT
AV2	(2) EXISTING XLR MIC INPUTS
AV3	(1) EXISTING 1/4" PHONO PLUG SOCKET
S	EXISTING LOCAL AV SPEAKER



Oakley W. Best MS - AV Plan

3/32" = 1'-0"



Dearborn Heights School District 7
AV Systems for Large Spaces
 Dearborn Heights, MI

Oakley W. Best MS - AV Plan

6395 TECHNOLOGY AVENUE, SUITE A, KALAMAZOO, MI 49009
 P: 269-375-8996 · F: 269-375-4222 · WWW.SECANTCORP.COM

DATE ISSUED
2018-09-13

REVISION DATE

DRAWN BY
JAJ/NWW

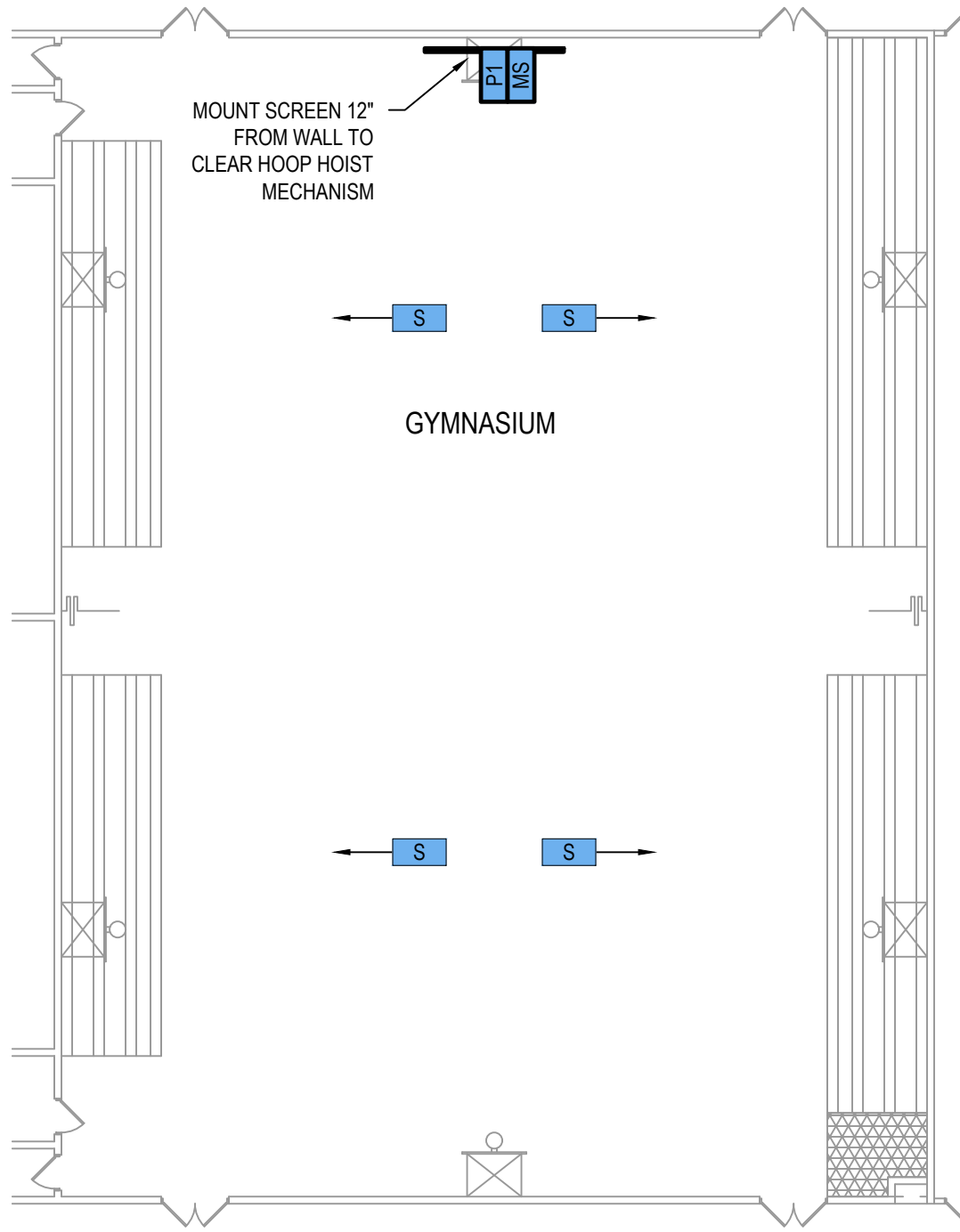
PROJECT NO.
2504G

SHEET NO.

T104

© 2018 SECANT, ALL RIGHTS RESERVED.

O:\Consulting\Clients\Active Projects\Dearborn Heights SD No. 70\HSD7 2504g - Large A_V Spec (Bid by Owner)\Drawings\Secant\HSD72504G T105 - ANNAPOLIS HS.dwg, 9/13/2018 11:56:00 AM



SYMBOL LEGEND

P1	NEW SHORT-THROW PROJECTOR
MS	NEW MOTORIZED SCREEN
SC	EXISTING FIXED SCREEN
AV1	(1) EXISTING XLR MIC INPUT
AV2	(2) EXISTING XLR MIC INPUTS
AV3	(1) EXISTING 1/4" PHONO PLUG SOCKET
S	EXISTING LOCAL AV SPEAKER



Annapolis HS - AV Plan

1/16" = 1'-0"



6395 TECHNOLOGY AVENUE, SUITE A, KALAMAZOO, MI 49009
P: 269-375-8996 · F: 269-375-4222 · WWW.SECANTCORP.COM

Dearborn Heights School District 7
AV Systems for Large Spaces
Dearborn Heights, MI

Annapolis HS - AV Plan

DATE ISSUED 2018-09-13
REVISION DATE _____ _____ _____
DRAWN BY JAJ/NWW
PROJECT NO. 2504G
SHEET NO. T105
© 2018 SECANT, ALL RIGHTS RESERVED.

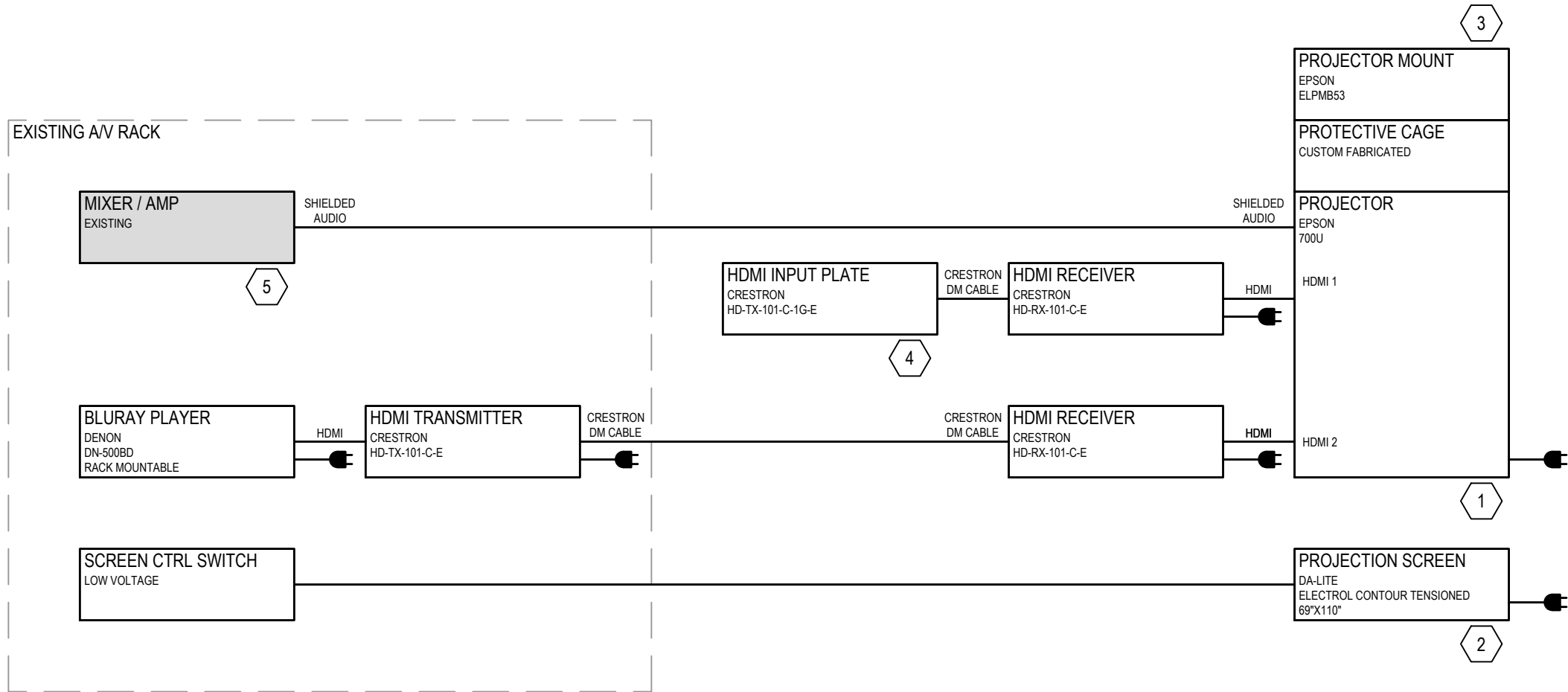
O:\Consulting\Clients\Active Projects\Dearborn Heights SD No. 70HSD7 2504g - Large A_V Spec (Bid by Owner)\Drawings\Secant\HSD72504G T601.dwg, 9/13/2018 11:56:02 AM

GENERAL NOTES

1. AV CONTRACTOR SHALL TEST THE OPERATION OF EXISTING SOUND SYSTEMS PRIOR TO ANY NEW WORK. DOCUMENT, AND NOTIFY OWNER OF, ANY NON-FUNCTIONAL ITEMS THAT ARE FOUND.
2. AT THE END OF THE PROJECT, AV CONTRACTOR SHALL DEMONSTRATE TO OWNER THAT ALL ORIGINAL AV FUNCTIONS REMAIN OPERATIONAL. CONTRACTOR IS RESPONSIBLE TO RETURN AV SYSTEMS TO THEIR ORIGINAL OPERATIONAL CONDITION.

KEYED NOTES

1. CONFIGURE FOR AUDIO DE-EMBED / PASS-THRU IN OFF/STANDY STATE
2. HARD-WIRE TO 120V POWER
3. ADHERE TO EPSON INSTALLATION GUIDE FOR PROPER MOUNTING RELATIONSHIP TO DISPLAY SURFACE
4. POWERED VIA DM CABLE (FROM RECEIVER)
5. PROVIDE ANY REQUIRED AUDIO ADAPTER EQUIPMENT FOR INPUT. CLEARLY LABEL AUDIO INPUT FROM PROJECTOR.



AV Riser
NTS



Secant

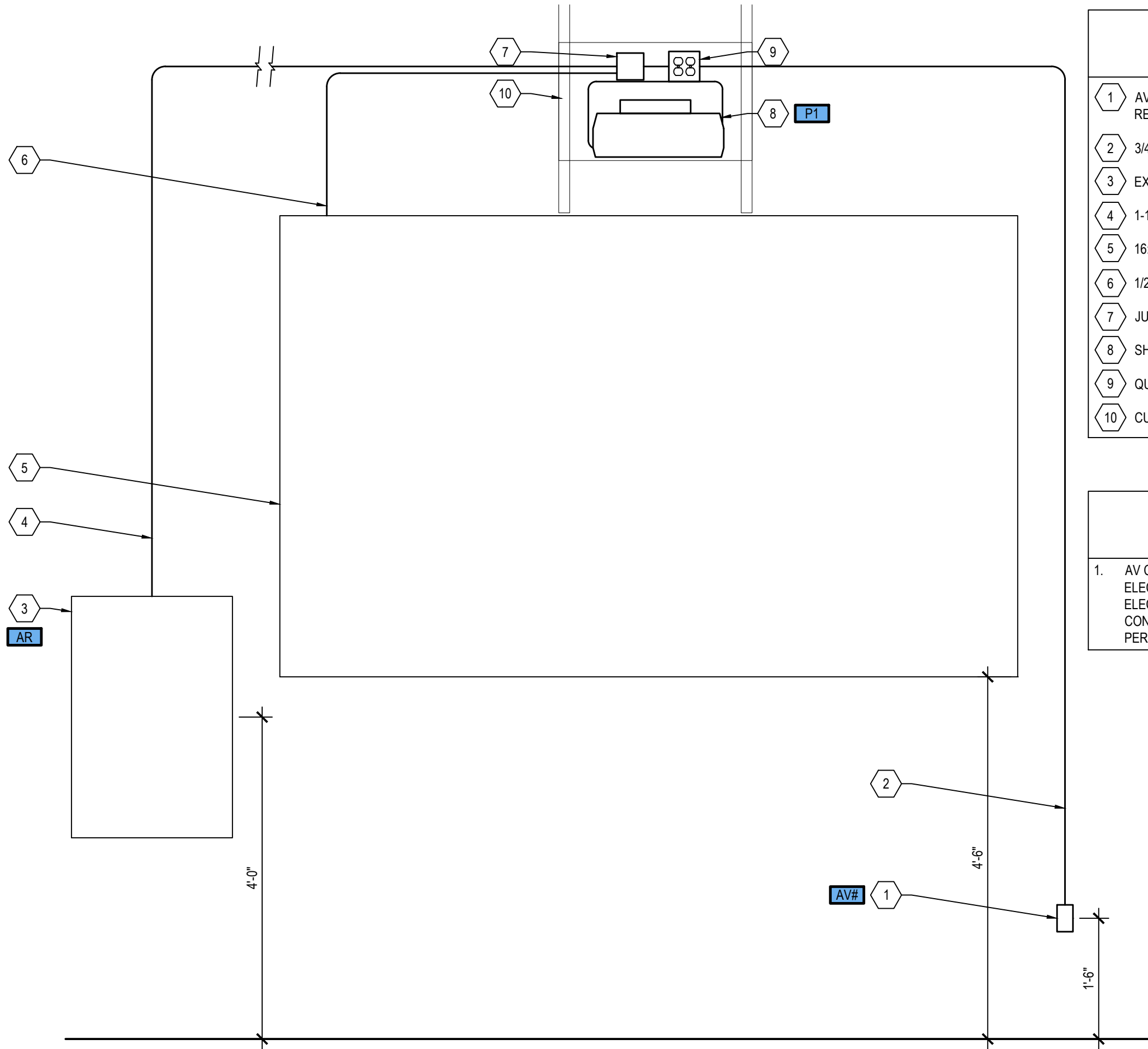
6395 TECHNOLOGY AVENUE, SUITE A, KALAMAZOO, MI 49009
P: 269-375-8996 · F: 269-375-4222 · WWW.SECANTCORP.COM

Dearborn Heights School District 7
AV Systems for Large Spaces
Dearborn Heights, MI

AV Riser

DATE ISSUED 2018-09-13
REVISION DATE _____ _____ _____
DRAWN BY NWW
PROJECT NO. 2504G
SHEET NO. T601
© 2018 SECANT, ALL RIGHTS RESERVED.

O:\Consulting\Clients\Active Projects\Dearborn Heights SD No. 70\HSD7 2504g - Large A_V Spec (Bid by Owner)\Drawings\Secant\HSD72504G T601.dwg, 9/13/2018 11:56:02 AM



KEYED NOTES

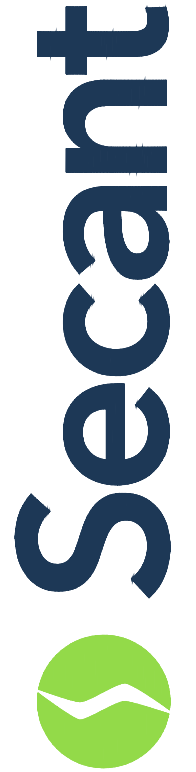
- 1 AV INPUT ROUGH-IN; 3" DEEP 4-SQUARE BOX W/ SINGLE-GANG REDUCING RING
- 2 3/4" EMT CONDUIT
- 3 EXISTING AV RACK
- 4 1-1/4" EMT CONDUIT
- 5 16:10 PROJECTION SCREEN; 130" DIAGONAL
- 6 1/2" EMT CONDUIT
- 7 JUNCTION BOX
- 8 SHORT-THROW PROJECTOR
- 9 QUAD 120V 5-20 POWER; WIRE TO NEAREST EXISTING CIRCUIT
- 10 CUSTOM PROJECTOR CAGE; SEE SHEET T603

GENERAL NOTES

1. AV CONTRACTOR IS RESPONSIBLE FOR ALL CONDUIT AND ELECTRICAL WORK. AV CONTRACTOR SHALL SUBCONTRACT ELECTRICAL WORK TO A LICENSED ELECTRICIAN. ELECTRICAL CONTRACTOR SHALL BE RESPONSIBLE FOR ANY REQUIRED PERMITS AND PERMIT FEES.

AV Rough-in Elevation

3/4"=1'-0"



6395 TECHNOLOGY AVENUE, SUITE A, KALAMAZOO, MI 49009
 P: 269-375-8996 · F: 269-375-4222 · WWW.SECANTCORP.COM

Dearborn Heights School District 7
 AV Systems for Large Spaces
 Dearborn Heights, MI

AV Rough-in Elevation

DATE ISSUED
 2018-09-13

REVISION DATE

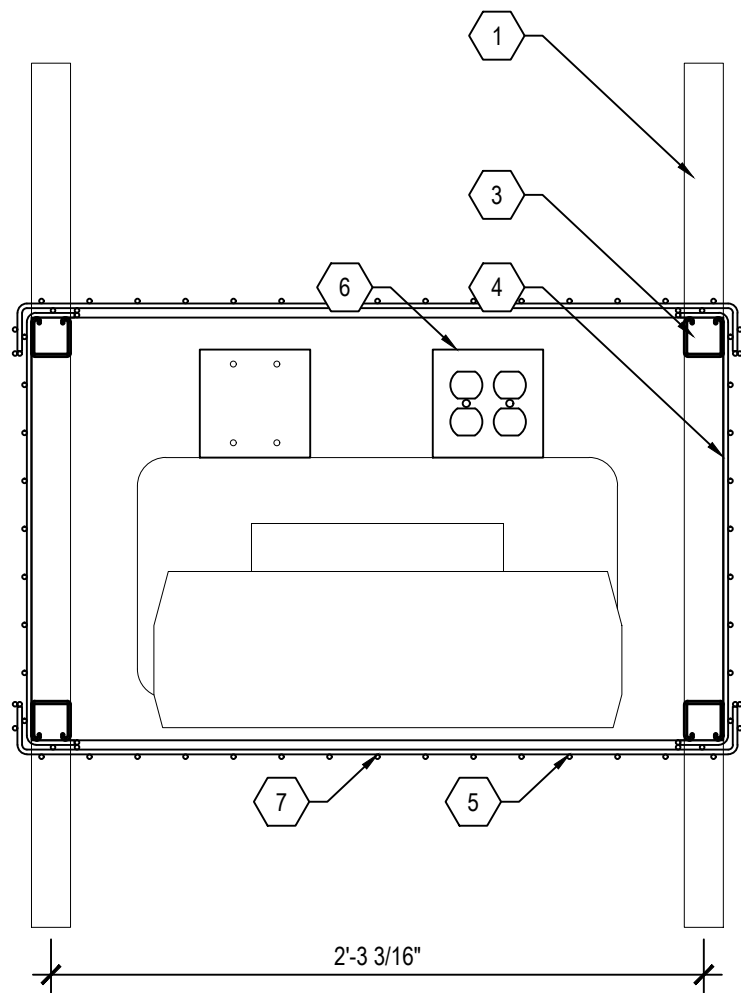
DRAWN BY
 NWW

PROJECT NO.
 2504G

SHEET NO.

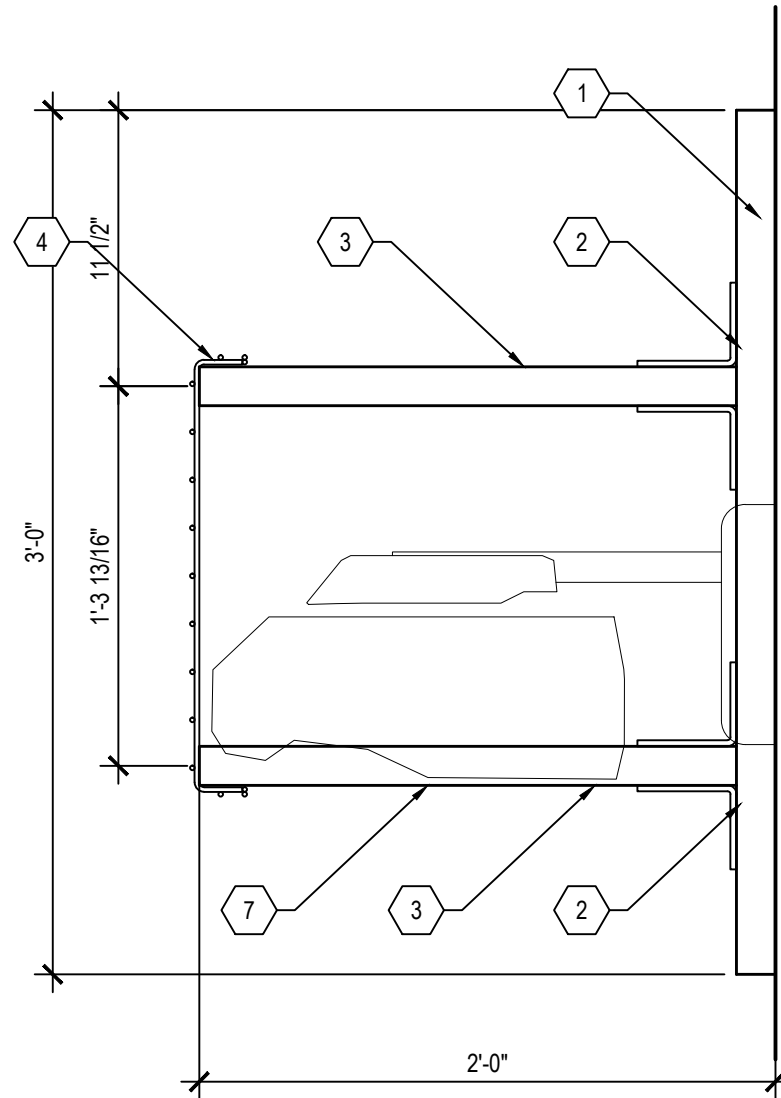
T602

O:\Consulting\Clients\Active Projects\Dearborn Heights SD No. 70\HSD7 2504g - Large A_V Spec (Bid by Owner)\Drawings\Secant\HSD72504G T601.dwg, 9/13/2018 11:56:03 AM



Projector Cage - Front View

1-1/2" = 1'-0"

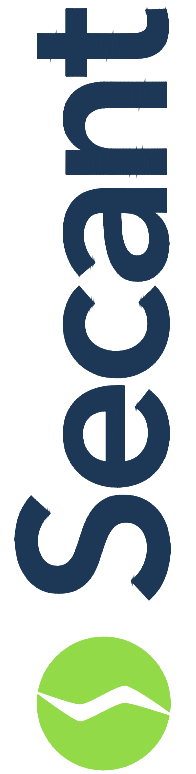


Projector Cage - Side View

1-1/2" = 1'-0"

KEYED NOTES

- 1 1-5/8" SLOTTED UNISTRUT CHANNEL P1000, CUT TO LENGTH AS SHOWN AND MECHANICALLY FASTEN TO WALL USING A MINIMUM OF (4) 1/4"-20 BOLTS AND ANCHORS. ANCHORS SHOULD BE RATED FOR A MINIMUM OF 120LBS EACH.
- 2 1-5/8" UNISTRUT FITTING P1325, FASTEN TO UNISTRUT CHANNEL USING MANUFACTURER APPROVED CONNECTORS
- 3 1-5/8" SLOTTED UNISTRUT CHANNEL P1000, CUT TO LENGTH AS SHOWN
- 4 (3) LENGTHS OF COOPER FLEXTRAY FT2X18 CABLETRAY; MECHANICALLY FASTEN TO UNISTRUT FRAME USING (4) 1/4"-20 BOLTS
- 5 (2) LENGTHS OF COOPER FLEXTRAY FT2X30 CABLETRAY; MECHANICALLY FASTEN TO UNISTRUT FRAME USING (4) 1/4"-20 BOLTS OVER FT2X18 CABLETRAY
- 6 QUAD 120V RECEPTACLE; SURFACE MOUNT INSIDE OF CAGE AREA; WIRE TO NEAREST EXISTING CIRCUIT
- 7 REMOVE THE SMALLEST AMOUNT OF CABLETRAY SUPPORT WIRES TO PROVIDE AN UNOBSTRUCTED PROJECTION PATH.



6395 TECHNOLOGY AVENUE, SUITE A, KALAMAZOO, MI 49009
P: 269-375-8996 · F: 269-375-4222 · WWW.SECANTCORP.COM

Dearborn Heights School District 7
AV Systems for Large Spaces
Dearborn Heights, MI

Projector Cage Details

DATE ISSUED
2018-09-13

REVISION DATE

DRAWN BY
NWW

PROJECT NO.
2504G

SHEET NO.

T603